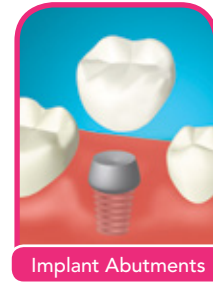
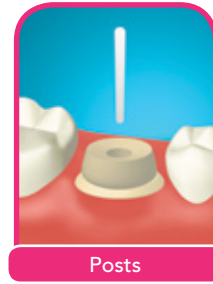
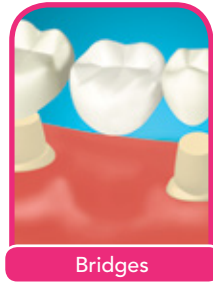
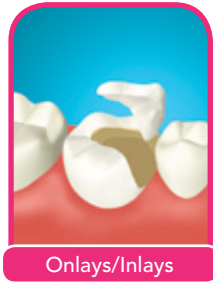


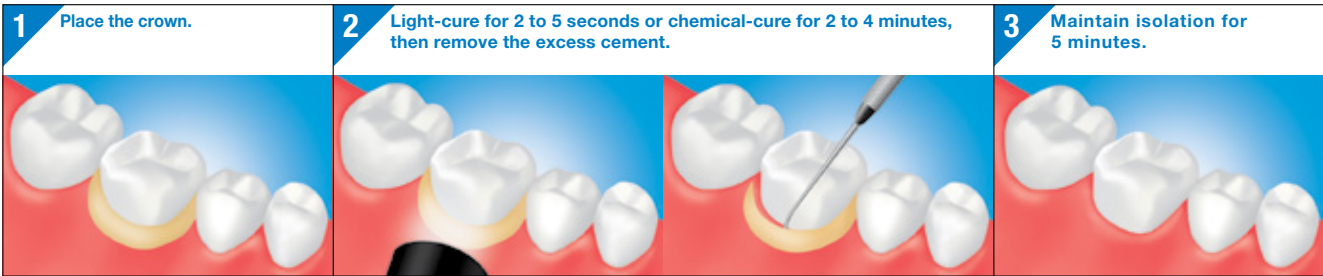
PANAVIA SA Cement Plus¹ can be used with all current popular materials:

- Zirconia (e.g. Zirprime, KATANA Zirconia, BruxZir* Solid Zirconia)
- Feldspathic porcelain
- Lithium disilicate (e.g. IPS e.max*)
- Leucite reinforced glass ceramic (e.g. IPS Empress*)
- Metal
- Composite resin

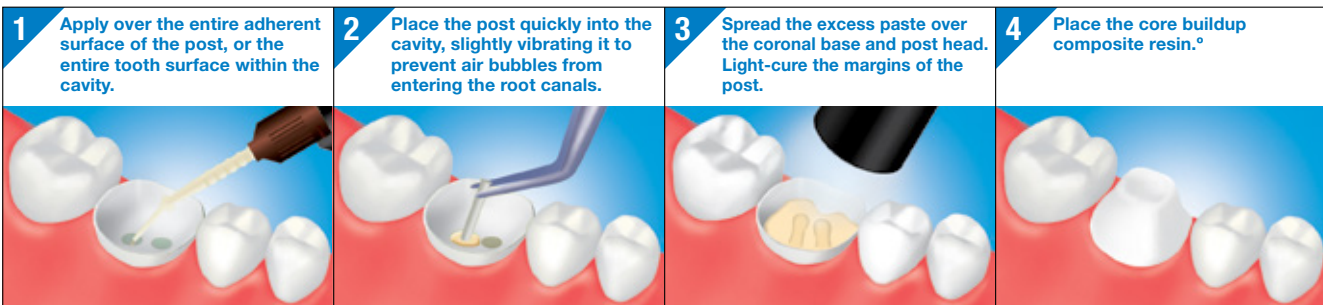
* Not a trademark of KURARAY Co., Ltd



CEMENTATION OF CROWNS



CEMENTATION OF POSTS



> For HANDMIX option, mixing is required. Please refer to the **PANAVIA SA Cement Plus Handmix IFU**.

^o Prepare the abutment tooth 10 minutes after placing the dental post.

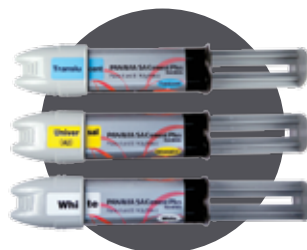
ORDERING INFORMATION



PANAVIA SA Cement Plus Automix
 #3382KA Universal (A2)
 #3383KA White
 #3384KA Translucent
 Content: 1 syringe:
 • Paste A and B: 8.0 g (4.6 ml)
 Mixing Tip: 20 tips



PANAVIA SA Cement Plus Automix: VALUE KIT
 #3385KA Universal (A2)
 #3387KA Translucent
 Content: 3 syringes:
 • Paste A and B: 8.0 g (4.6 ml)
 Mixing Tip: 2 x 20 tips
 Endo Tip (SS): 10 tips



PANAVIA SA Cement Plus Handmix
 #3352KA Universal (A2)
 #3353KA White
 #3354KA Translucent
 Content: 1 syringe:
 • Paste A and B: 9.3 g (5.0 ml)

PANAVIA SA Cement Plus Automix: Accessories

#3391KA Mixing Tip (20 PCS)

#3392KA Endo Tip (SS) (20 PCS)

¹ Denotes both PANAVIA SA Cement Plus Automix and PANAVIA SA Cement Plus Handmix

Warranty: Kuraray Noritake Dental Inc. will replace any product that is proved to be defective. Neither Kuraray Noritake Dental Inc. nor the distributor accepts liability for any loss or damage, direct, consequential or special, arising out of the application or use of or the inability to use these products. Before using, the user should determine the suitability of the products for the intended use and the user assumes all risk and liability whatsoever in connection therewith. PANAVIA™ SA Cement Plus and Kuraray Noritake Dental Inc. products are available only through Kuraray Authorized dealers. "KATANA" and "Zirprime" are trademarks of NORITAKE CO., LIMITED. "CLEARFIL" and "PANAVIA" are trademarks of KURARAY Co., Ltd.

Manufactured by Kuraray Noritake Dental Inc.
 1621 Sakazu, Kurashiki, Okayama 710-0801, Japan

#3382LT